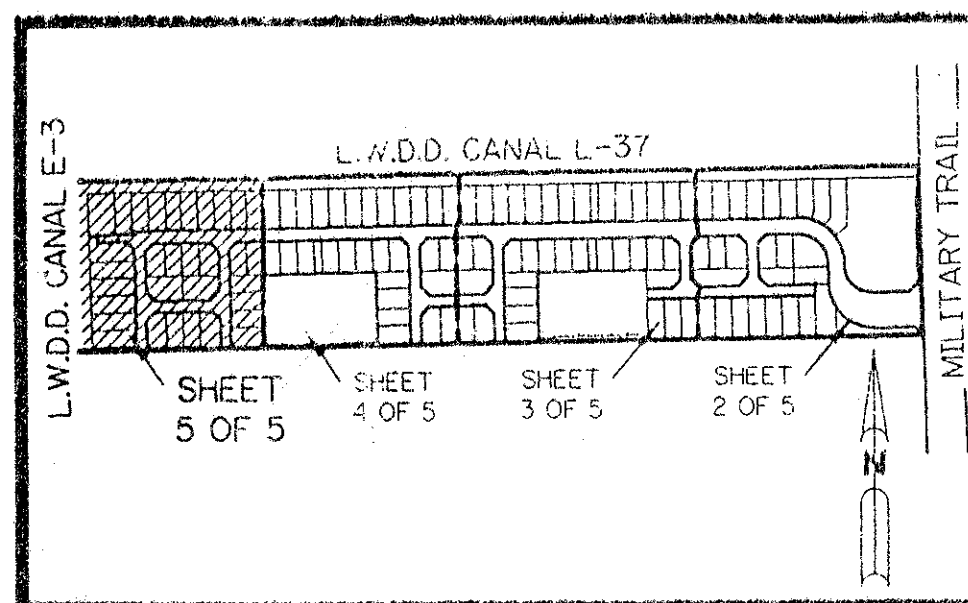


VENTURA P.U.D.

THE NORTH ONE-HALF OF THAT PART OF THE NORTH ONE-HALF OF THE SOUTHEAST ONE-QUARTER OF SECTION 26, TOWNSHIP 46 SOUTH, RANGE 42 EAST, PALM BEACH COUNTY, FLORIDA, LYING SOUTH OF LAKE WORTH DRAINAGE DISTRICT LATERAL NO. 37, LESS THE RIGHT-OF-WAY OF STATE ROAD 809 (MILITARY TRAIL).

SHEET 5 OF 5 MARCH, 1995



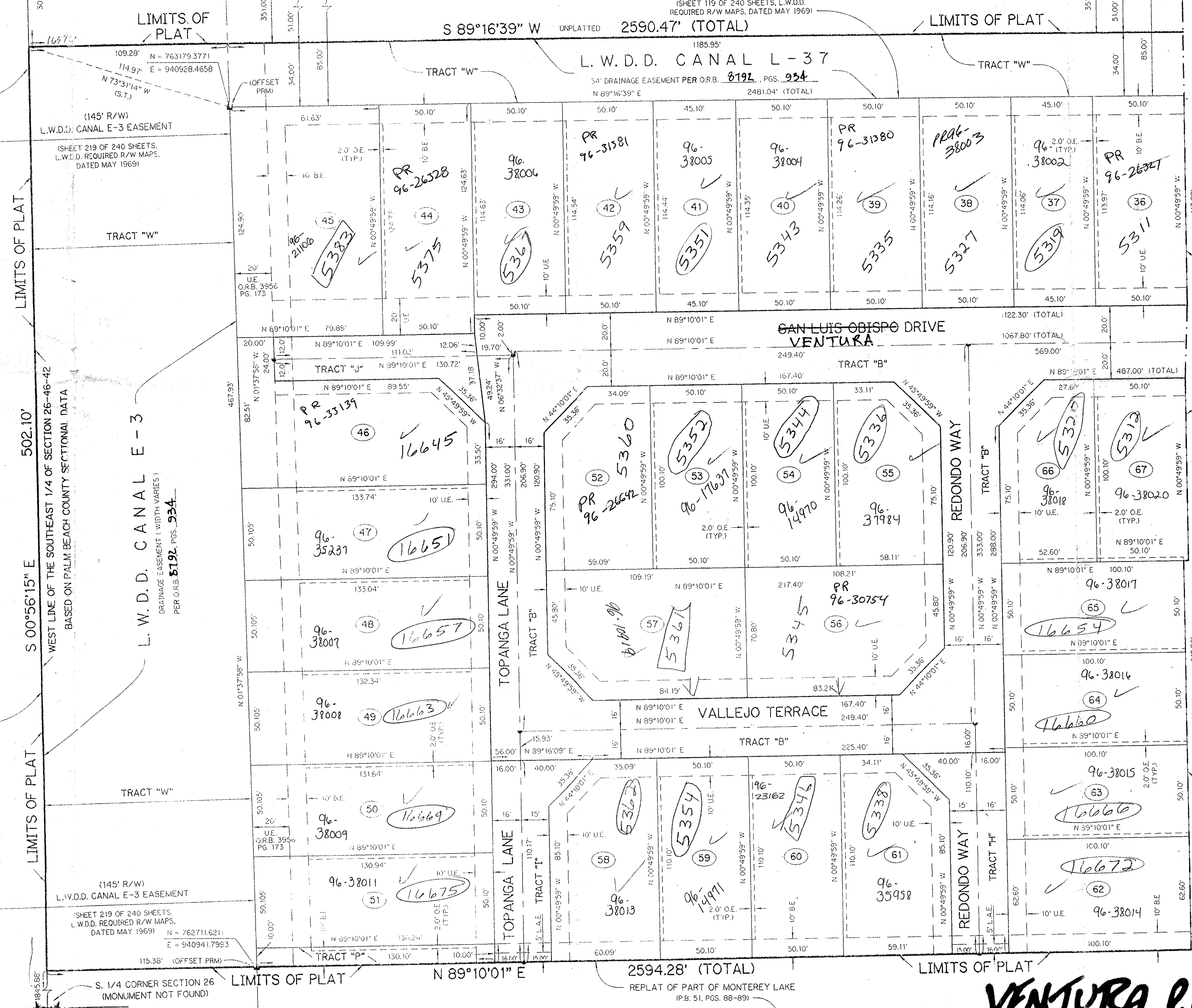
KEY MAP N.T.S.

N 1/4 CORNER SECTION 26 (MONUMENT NOT FOUND)

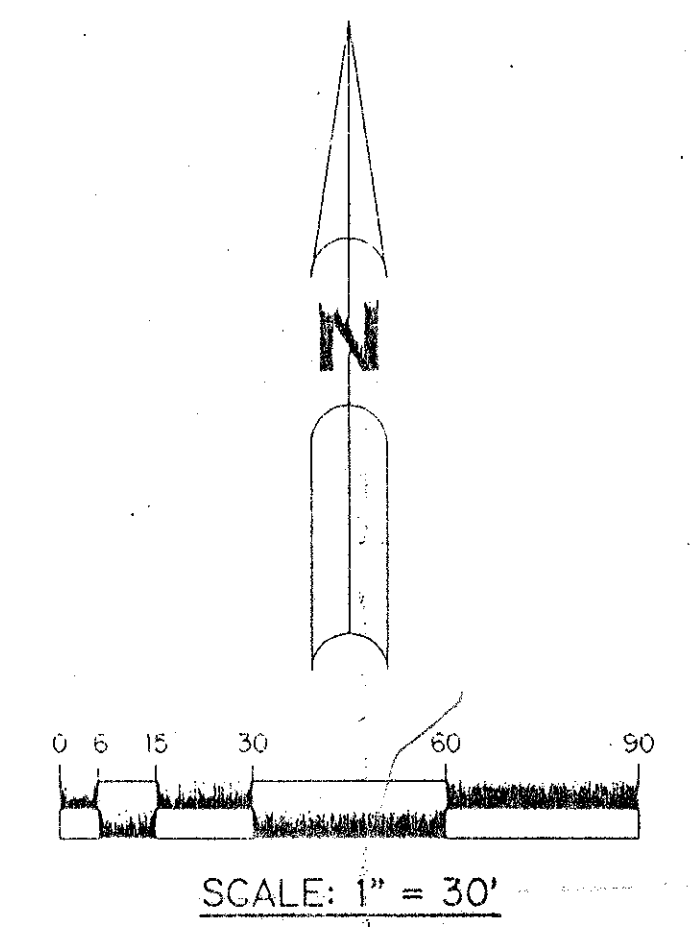
PLAT 1 OF LA CASA (P.B. 58, PGS. 187-190)

PLAT 1 OF LA CASA (P.B. 58, PGS. 187-190)

NORTH LINE OF THE SOUTHEAST 1/4 OF SECTION 26-46-42



PET. 94-59
ALOC. #0001
5/13/1K



- LEGEND:**
- PERMANENT REFERENCE MONUMENT, PLS #4190
 - △ PERMANENT CONTROL POINT, PLS #4190
 - ∠ DELTA ANGLE
 - A ARC LENGTH
 - B.E. BUFFER EASEMENT
 - D.E. DRAINAGE EASEMENT
 - L.M.A.E. LAKE MAINTENANCE ACCESS EASEMENT
 - L.A.E. LIMITED ACCESS EASEMENT
 - L.M.E. LAKE MAINTENANCE EASEMENT
 - L.W.D.D. LAKE WORTH DRAINAGE DISTRICT
 - N.R. NOT RADIAL
 - N.T.S. NOT TO SCALE
 - O.E. OVERHANGING EASEMENT AND MAINTENANCE EASEMENT
 - O.R.B. OFFICIAL RECORD BOOK
 - P.B. PLAT BOOK
 - PGS. PAGES
 - P.L.S. PROFESSIONAL LAND SURVEYOR
 - P.U.D. PLANNED UNIT DEVELOPMENT
 - R. RADIUS
 - R/W. RIGHT-OF-WAY
 - S.T. SURVEY TIE
 - U.E. UTILITY EASEMENT
 - N = 1000.0000 - STATE PLANE COORDINATES
 - E = 1000.0000

SUBDIVISION * Ventura P.U.D.
BOOK 75 PAGE 46
FLOOD MAP # 220B
ZONING PUD
QUAD # 37
SE 94-59
PUD NAME
TAZ 476

SEE MILITARY TRAIL PUD

THIS INSTRUMENT PREPARED BY
WILBUR F. DIVINE, P.L.S. 4190, STATE OF FLORIDA
LAWSON, NOBLE AND ASSOCIATES, INC.
ENGINEERS PLANNERS SURVEYORS
WEST PALM BEACH, FLORIDA

75/46
0648-001
VENTURA P.U.D. SHEET 5 OF 5